

Beerlender®

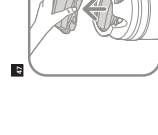
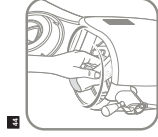
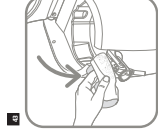
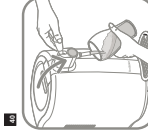
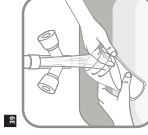
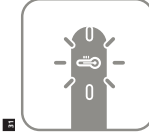
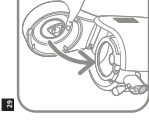
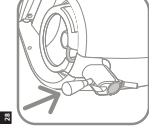
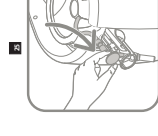
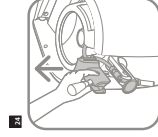
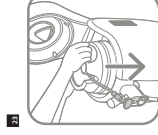
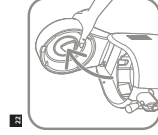
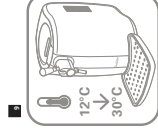
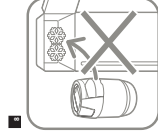
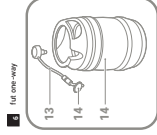
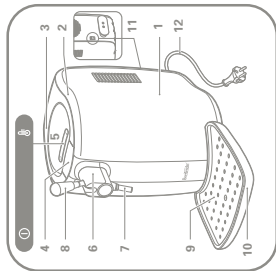
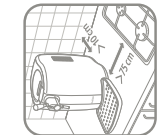
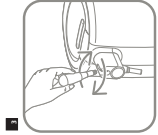
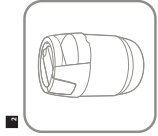
USA: 1-800-395-8325 www.t-falusa.com
CANADA : 1-800-418-3325 www.t-fal.ca

0828 074

T-fal®



Beerlender®



1 - Important safeguards	4
2 - General Information	6
3 - Product description	7
4 - Before use	7
5 - Using the BeerTender®	8
6 - Troubleshooting	13
7 - Disposal	16
8 - Consumer service	16
9 - Limited warranty	17

ENGLISH

T-fal®

3

Beertender®

1 - IMPORTANT SAFEGUARDS

When using electrical appliances, basic safety precautions should always be followed to reduce the risk of fire, electric shock, and/or injury to persons including the following :

1. Read all instructions.
2. To protect against fire, electric shock and injury to persons, do not place cord, plugs or appliance in water or other liquid.
3. Close supervision is necessary when any appliance is used near children. Keep appliance out of reach of children. Product not intended for use by children.
4. Unplug from outlet when not in use and before cleaning. Allow to cool before putting on or taking off parts, and before cleaning the rest of the appliance.
5. Do not operate any appliance with a damaged cord or plug or after the appliance malfunctions, or has been damaged in any manner. Return appliance to your nearest authorized T-fal Service Center for examination, repair or adjustment (see Limited Warranty).
6. The use of an accessory not evaluated for use with this appliance by T-fal may result in fire, electric shock or injury to persons.
7. Do not use outdoors.
8. Do not let cord hang over edge of table or counter, or touch hot surfaces.
9. Do not place on or near a hot gas or electric burner, or in a heated oven.
10. To disconnect, turn the control to «off» then remove plug from wall outlet.
11. Do not use appliance for other than intended use.
12. Appliance for household indoor use only.
13. Do not immerse in water.

SAVE THESE INSTRUCTIONS

T-fal

4

Beerlender

CAUTION



This appliance is for household use only. Any servicing other than cleaning and user maintenance should be performed by an authorized service representative.

- To reduce the risk of fire or electric shock, do not remove the base. No user serviceable parts inside. Repair should be done by authorized service personnel only.
- Check voltage to be sure that the voltage indicated on the name plate is compatible with your voltage.
- Never clean with scouring powders or harsh chemicals.
- Never make technical changes or use the appliance in any manner other than as directed.

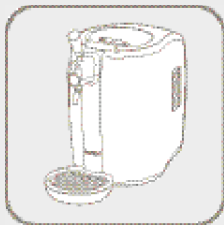
SHORT CORD INSTRUCTIONS



A. We do not recommend using an extension cord with this device.

B. If an extension cord is absolutely necessary :

- 1 - The marked electrical rating of the extension cord should be at least as great as the electrical rating of the appliance.
- 2 - To reduce the risk of injury, do not drape cord over the counter top or table top where it can be pulled on by children or tripped over unintentionally.
- 3 - The extension cord should be at least 18 AWG.



2 General information

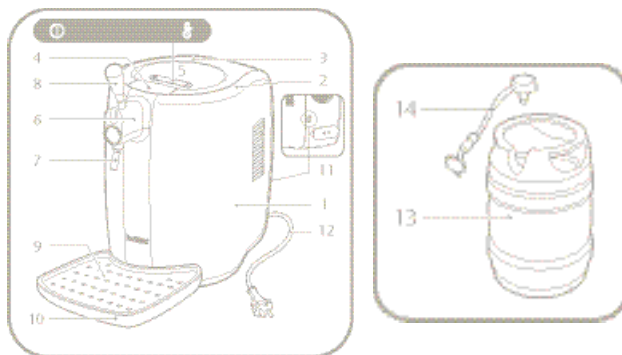
The BeerTender® is designed to dispense chilled beer in a domestic setting. Only a Heineken® DraughtKeg™ and Heineken Premium Light® DraughtKeg™ can be used with the BeerTender. You should not use any other commercially available beer containers or kegs. Do not introduce any materials other than the DraughtKeg inside the appliance.

BeerTender is designed for use by responsible adults of legal drinking age.

Guidelines for reading these instructions

- * The warning triangle indicates instructions that are important for the user's safety.
- * Please adhere strictly to these directions to ensure proper use and avoid serious injury!
- * This symbol highlights information that is especially important for making the best use of the machine.

3 Product description



BeerTender® components

1. BeerTender at home draughting system
2. Refrigerating chamber
3. Lid
4. Lid opening handle
5. Control panel
6. Tap cover
7. Dispensing spout
8. Beer tap handle
9. Drip grate
10. Drip tray
11. Main power switch
12. Power cord with plug

Other Components

13. 5 Liter DraughtKeg™ (not included)
14. Replaceable Draught Beer tube
(Should be changed with each new DraughtKeg)
(5 included with purchase)

4 Before use

Child Safety Lock

- * Make sure that children can not play with the appliance.
- * Do not leave the materials used to pack the appliance within children's reach.
- * To prevent children from using the appliance, you can remove the tap handle. To remove the handle, make sure that it is in an upright position and pull upward.



T-fal

Beerlender®



Fire prevention

In the event of a fire, use carbon dioxide (CO₂) extinguishers.

Do not use water or powder extinguishers.

Setup and Maintenance

- * Install the BeerTender® in an upright position in a safe place.
- * To ensure that the BeerTender works correctly and efficiently, the following is strongly advised:
- * Place it on a perfectly level and stable surface.
- * Choose a clean, well-lit area with an easily accessible electric socket.
- * Keep the appliance at a minimum distance (4 inches) from the stove as shown in the diagram.
- * Keep the appliance at a minimum distance (2 ½ inches) from the walls.
- * Store the DraughtKeg™ at room temperature or in the refrigerator.
- * Make sure the BeerTender is not exposed to direct sunlight.
- * Do not use the BeerTender outdoors.
- * Do not place the BeerTender on very hot surfaces or near open flames, as these may melt or damage the casing.
- * Your BeerTender uses a technology that delivers ultimate cooling results when the ambient temperature is between 54°F and 86°F. At colder temperatures, the appliance cooling system could be damaged. At warmer temperatures, the cooling system will not be able to reach the pre-programmed temperature.

Warning! To avoid overheating, always keep the BeerTender appliance out of direct sunlight. To obtain good cooling performance, never install your machine in a room with an ambient temperature above 86°F.

5 Using the BeerTender System

- * Always hold the appliance by the bottom edge when lifting.
- * To obtain draught beer of optimal quality you should keep two basic factors in mind, the temperature of the beer and hygienic conditions. Follow these few simple steps for the ideal use of BeerTender.

T-fal

A new draught beer tube should be used with each DraughtKeg™
A bag of 5 tubes is included with the BeerTender® appliance. To order additional beer tubes, please contact www.beertender.com or call 1-888-HEINEKEN.

Chilling the DraughtKeg

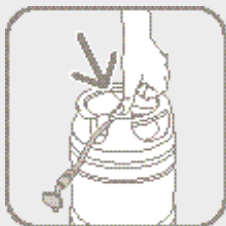
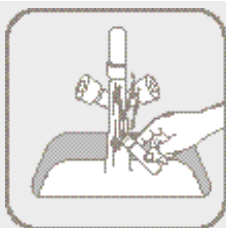
1. Before pouring a draught beer, it is very important that the Heineken® and Heineken Premium Light® DraughtKeg reach the correct temperature.
2. Ensure DraughtKeg is sufficiently chilled before pouring a draught beer. Insufficiently chilled DraughtKegs will produce too much foam. It is ideal to purchase the DraughtKeg pre-chilled or pre-chill over night before intended use. If the DraughtKeg needs additional chilling, there are 2 recommended options:
 - a. Inside the BeerTender – Depending on the temperature of the DraughtKeg, it will take up to 18 hours to chill to the ideal serving temperature.
 - b. In a refrigerator – Depending on the temperature of your refrigerator, it will take up to 12 hours to chill to the ideal serving temperature.

Tip: We recommend that you always keep an extra DraughtKeg in your refrigerator to always have a chilled keg available.

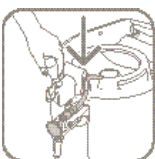
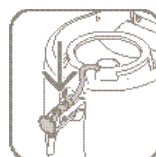
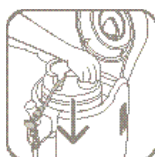
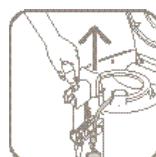
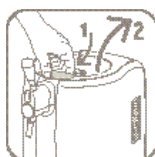
Preparing the BeerTender

IMPORTANT: It is important that the BeerTender power switch is turned on before inserting the DraughtKeg.

ENGLISH



- * After setting up the BeerTender® and before use, it is vital to clean the detachable pour spout – this is the only part of the appliance that will come into contact with the beer. The spout should be rinsed by hand. After cleaning, screw back into place.
- * Before inserting the DraughtKeg™ into the BeerTender, simply snap the patented disposable draught beer tube (5 tubes included) onto the DraughtKeg.
- * Open the BeerTender cover by pressing in the release panel on the top of the machine.
- * Place DraughtKeg into BeerTender.
- * Remove the tap spout cover by lifting it up.
- * Position the draught beer tube as shown in drawing.
- * Put the tap spout cover back into place.
- * Carefully close the lid.
- * Set the drip tray and grate in place at the front of the appliance. Make sure the drip tray is properly fitted and positioned.

**T-fal**

10

BeerTender®



WARNING! The drip tray must be positioned on a level surface and must not jut out from the surface it is resting on.

Control Panel

Your appliance features a display providing you with important and useful information.

Two LEDs on the top of the lid provide important indications:

Green (ON/OFF) LED on the left of the panel: when lit, it indicates that the appliance is operating.

Green beer-temperature LED on the right side of the panel: when the DraughtKeg™ has reached the ideal temperature the LED switches on and the appliance goes into “stand-by” cooling mode.



Warning: never use your BeerTender® with ambient temperature above 86°F. Above that level, the ideal serving temperature can not be attained.

Pouring a beer from the BeerTender

- * Before pouring a beer, rinse a clean glass in cold water which chills the glass and wets the inside to enable a perfectly smooth draught pour. Use of 8 oz glasses is recommended to maintain the ideal serving temperature.

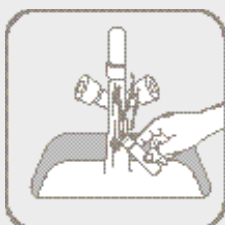
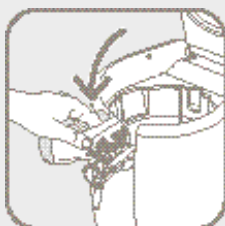
Draught and Drink

- * Be aware that the first glass you pour from every new DraughtKeg will contain mostly foam. This is typical of draught beer. Allow the foam to settle and continue to pour.
- * Tilt and pour: Tilt your glass at a 45 degree angle as you pour and adjust upright as the glass fills.
- * Ensure you pull the tap handle all the way down. Not opening the handle all the way will result in excessive foam.
- * For the optimal draught beer drinking experience, serve your beer with a foam head of 2 fingers in height (approximately 1.5”).

T-fal

ENGLISH

ENGLISH



Proper Care and Cleaning of your BeerTender®

- * The drip tray and grate should be emptied and cleaned after each use.
- * Before cleaning the appliance, it is essential to turn off the ON/OFF switch and then pull the plug out of the socket.
- * Keep in mind that during use the drip tray will have to be emptied and rinsed regularly. The tray and grate are dishwasher safe or can be washed by hand with a mild detergent. Dry completely.
- * Always wipe down the interior of the BeerTender after use. Beer is a natural product that can spoil. Therefore, you should always keep the appliance clean to maintain the quality of the beer dispensed and avoid unpleasant odors.
- * Rinse the pour spout between uses for optimal results. Handwash with warm soapy water. Do not wash in dishwasher.
- * To remove, unscrew turning counterclockwise from main unit. To re-attach, simply screw back in place turning clockwise.
- * You should never attempt to access internal parts of the appliance.

IMPORTANT: After cleaning, ensure all parts of your BeerTender have completely dried before closing the lid.

Storing the BeerTender

- * When the BeerTender is not being used for a long period of time, remove the DraughtKeg™ and turn the control to "off".
- * Remove the plug from the power outlet.
- * Store the BeerTender at room temperature in a dry place out of children's reach.
- * Protect from dust and dirt.

T-fal

12

Beertender®

ENGLISH

ENGLISH

6 Troubleshooting

Problem	Possible causes	Remedies
The appliance does not come on.	The appliance is not connected to the outlet.	Connect the appliance to the outlet.
You cannot position the tap cover correctly.	You may have opened the draught beer tube (white plastic part at the end of the serving tube) by hand. If so, the tap cover will not close correctly and there is a risk for the beer to flow out.	Before installing the draught beer tube onto the BeerTender® tapping mechanism, make sure that the draught beer tube is closed.
You cannot position the tap cover correctly.	The DraughtKeg™ tap or tube is not inserted correctly.	If the draught beer tube is not installed properly in the tapping mechanism or if the tube is pinched, this will affect the beer flow. Please refer to Section 5: Using the BeerTender System to check that you have properly set up the BeerTender.
No beer is being dispensed.	The appliance is off.	Switch the appliance on.

ENGLISH

No beer is being dispensed.	The DraughtKeg™ is empty.	Replace the DraughtKeg with a new one.
	There is no DraughtKeg inside the BeerTender® appliance.	Install a DraughtKeg inside the BeerTender appliance.
	The BeerTender appliance tap handle is not correctly installed/positioned.	Install/position the tap cover correctly.
You cannot close the lid.	The tap cover has not been positioned correctly.	Position the tap cover correctly.
You cannot close the lid.	The DraughtKeg has not been correctly installed.	Install the tap correctly. Ensure the draught tube has been installed completely and is not preventing the lid from closing.
The BeerTender appliance produces too much foam when dispensing beer.	The DraughtKeg has not reached the right dispensing temperature.	Allow the DraughtKeg to cool to the right temperature. You can rely on the temperature indicator on the control panel of your BeerTender appliance.
	The DraughtKeg has been shaken.	Wait 4 hours before dispensing beer.
	The tap handle is being moved too slowly.	Firmly and quickly pull the handle down and forward as far as it will go.

T-fal

Beer flows out too slowly.	The tap handle is not open all the way.	Open the tap completely.
The BeerTender® appliance is dispensing warm beer.	The DraughtKeg™ has not been chilled long enough and is thus not at the right serving temperature.	Allow the DraughtKeg to cool long enough in the appliance.
The temperature indicator on the control panel does not light up.	The BeerTender appliance is exposed to too hot a temperature or direct sunlight (see also section 5: Cooling the keg and Installing the BeerTender).	Use the appliance indoors and move it to a room where the ambient temperature does not exceed 86°F.
Ice forms in the cooling chamber.	The BeerTender has been installed in a humid environment.	Move the BeerTender to a dry place.
	A fault has occurred in the cooling system.	Have the BeerTender repaired by an authorized service center.
	It is normal for a small patch of ice to form on the rear of the cooling chamber (near the screws).	

7 - Disposal

- * Check your local ordinances for disposal of BeerTender®.

8 - Consumer service

If you have additional questions, please call our Consumer Service Department.
It is helpful to have the product available at the time of your call and to know the reference number that can generally be found on the base of the product.

USA :

Online www.t-falusa.com

Phone 1-800-395-8325

Hours* Monday – Thursday from 8:30 a.m. – 5:00 p.m. (EST), Friday 8:30 a.m. – 4:00 p.m. (EST)

Letters should be addressed to :
Groupe SEB – Consumer Service
2121 Eden Road
Millville NJ, 08332

Only letters can be accepted. Packages without a return authorization number will be refused.

CANADA

Phone 1-800-418-3325

Hours* Monday – Friday 8:30 a.m. – 4:30 p.m. (EST)

Letters should be addressed to
Groupe SEB Canada Inc.
345 Passmore Avenue
Toronto, Ontario
Canada, M1V 3N8

*Please note hours are subject to change.

9 - Limited Warranty

ONE YEAR LIMITED WARRANTY

ENGLISH

The manufacturer warrants this product to be defect free in material and workmanship for a period of one year from the date of purchase. Defective products may be returned by the original purchaser or any subsequent owner within the warranty period, postage pre-paid together with proof of purchase (register receipt) to an authorized T-fal return facility.

If product is returned without proof of purchase it will be reviewed based on the manufacturing production week and year to determine warranty coverage.

Defective products will be replaced at no charge including return postage if it falls within the warranty timeframe.

The warranty does not apply to any unit that has been tampered with, nor to damages incurred through improper use and care, faulty packing or mishandling by any common carrier.

The manufacturer's sole obligation and your exclusive remedy under this warranty are limited to such replacement. This is a limited warranty and is in lieu of all other warranties, express or implied, including merchantability. This warranty gives you specific legal rights. You may also have other legal rights varying from state to state.

If you have a claim:

- 1) Do not return the product to the retailer from which it was purchased.
- 2) Please contact our consumer service department (1-800-395-8325 M-Th 8:30am - 5pm & Fr 8:30am - 4pm EST) for assistance and to ensure the fastest possible resolution to the problem. Please have the model or type number of your product on hand.
- 3) If it is determined that you should return your product for replacement - send the product along with original proof of purchase and a description of the problem to the closest authorized T-fal return facility (see www.T-falusa.com or call 1-800-395-8325).
- 4) Be sure to include your name, address and home telephone number with your shipment. Another contact number is suggested in case you need to be contacted.
- 5) Returns must be sent with all shipping charges pre-paid. We suggest that you carefully wrap your package for shipping and send by insured and/or by traceable means.

T-fal

ENGLISH

ONE YEAR LIMITED WARRANTY

What happens to my return?

If the inspection shows that the product is defective, under our Limited Warranty, the return facility will notify T-fal to replace the defective part or product at no cost to you. Comparable substitutions are based on replacement product availability and at the sole discretion of the Manufacturer.

If the inspection shows that the product is not defective under our Limited Warranty we will notify you. Shipping charges may apply to product not covered under warranty.

* Please allow 5 - 10 business days to process your return. You will be notified if a repair will take longer.

This product has been designed for domestic use only. Any professional use, inappropriate use or failure to comply with the instructions, the manufacturer accepts no responsibility and the warranty will not apply.

Read the instructions for use carefully before using your appliance for the first time.

Any use which does not conform to these instructions will absolve T-fal from any liability.

T-fal